



JOSHUA TREE
AVEDA CONCEPT SALON & SPA

service menu
Online booking



AVEDA

THE ART AND SCIENCE OF PURE FLOWER AND PLANT ESSENCES

Our mission at **aveda** is to care for the world we live in, from the products we make to the ways in which we give back to society. At **aveda**, we strive to set an example for environmental leadership and responsibility, not just in the world of beauty, but around the world.

Horst Rachelbacher
Founder

The **Joshua Tree Aveda Concept Salon & Spa** is the premier location to experience the Aveda brand in its entirety, from complimentary rituals to the personal touch you receive from our expert stylists, colour technicians, spa therapists and retail advisors.

A place where beauty and well being converge, this uniquely designed space, blends sustainable timber beams, bamboo, stone and earthy organic colour tones to create a calming and bespoke urban retreat.

The large ground floor hair salon, with its high ceilings and sense of space, offers the very latest in hair colouring, cut and design, led by highly skilled hair dressing professionals, using Aveda's up to 99% naturally derived* hair colour, products and ethos.

The Spa, designed over 2 floors, delivers beauty treatments, rituals and signature spa days, inspired by plant based healing traditions from around the world. The 'chill out zone' also offers the perfect Spa day, wedding party and special event venue and can be booked for private and exclusive celebrations.

JOSHUA TREE, EXPERIENCE SOMETHING MORE...

*from plants, non-petroleum minerals or water. Learn more at aveda.co.uk

HAIR CUTTING SERVICE

Our team of stylists are highly experienced in working with all hair types and texture. After a personalised consultation, enjoy an Aveda Sensory Journey using natural essential oils and a Stress-Relieving Scalp and Shoulder Ritual before your service.

Stylist	Ladies	Mens	Childrens
Artistic Director	from £50	from £35	from £25
Creative Master	from £45	from £32	from £22
Master Stylist	from £40	from £28	from £20
Senior Stylist	from £35	from £25	from £18
Stylist	from £30	from £20	from £15
New Talent	from £25	from £18	from £10

Please Note: There is an additional charge for long / thick hair. Price on consultation.

AVEDA FULL SPECTRUM™ HAIR COLOUR

Our colour uses plant power instead of petrochemicals and is manufactured with 100% certified wind power. Immerses hair in up to 99% naturally derived* formulas for essentially damage-free results.

Colourist	Artistic Director	Creative Master	Master Stylist	Senior Stylist	Stylist	New Talent
Full Head Highlights	£88	£85	£83	£80	£75	£65
Half Head Highlights and Tint	£110	£107	£102	£96	£92	£80
Half Head Highlights	£68	£65	£62	£58	£55	£45
Enlightener Blonding and Toner	£55	£52	£50	£48	£47	£45
Full Head Permanent Colour	£55	£52	£50	£48	£47	£45
Permanent Roots	£45	£42	£40	£38	£37	£35
Semi-permanent Tint	£35	£33	£30	£28	£27	£25
Ombre/Baylage	£88	£85	£83	£80	£75	-
Colour Change / Correction	Price upon consultation					

A skin sensitivity test is required at least 48 hours prior to your appointment if you have not had Aveda colour in the last 12 months at the Joshua Tree or any change in medical circumstances. There is an additional charge in cases of long / thick hair.

*from plants, non-petroleum minerals or water. Learn more at aveda.co.uk

BOTANICAL THERAPY HAIR TREATMENT SERVICES (ALL HAIR TYPES)

Innovative plant micro technology penetrates strands for intense moisture and repair with customised treatments to meet your personal needs—restoring balance to the ecosystem of your scalp and hair.

Botanical Hair & Scalp Treatment
(includes a blow-dry & scalp massage)

Pricing

60 mins

£45

Add on to your styling or colour service:

- Scalp Detox or Scalp Balance £10
- Moisture and Repair £10
- Express Hair Rescue £10

Glossing Service from £25

99% naturally derived* Treatment - with a soothing lavender aroma. Choose from either a clear gloss or a customised colour gloss to enhance your hair with extra shine.

*from plants, non-petroleum minerals or water.
Learn more at aveda.co.uk



BLOW DRY MENU

HAIR UP

Stylist	Express 30 mins	Bespoke 45-60 mins	Hair Up & Bridal
Artistic Director	£35	£45	from £50
Creative Master	£32	£42	from £45
Master Stylist	£28	£38	from £40
Senior Stylist	£25	£35	from £35
Stylist	£20	£30	from £30
New Talent	£18	£28	from £25

*We always advise a consultation and pre-wedding/special event hair trial.
Wedding make up also available, please ask.



CLOUD NINE®

HAIR EXTENSIONS

Balmain hair extensions are an innovative method of adding volume, colour, creating texture or adding length to your natural hair – the possibilities are endless!

A complete Bespoke service, the range we are introducing at the Joshua Tree includes:

- Prebonded singles
- Wefts
- Clip in extensions

All available in 100% human hair.

Full advice on homecare will be given to you along with advice on when you should return to have your extensions replaced.

Pricing

Consultations	30 mins	£15
(redeemable against your Bespoke Hair Extension appointment)		

Bespoke Extension Service

Whether you're looking for length or volume your stylist will confirm a price during your consultation.



aveda men

Men's grooming menu

The merging of traditional barbering and holistic well-being, bringing you the best in grooming and men's maintenance.

Shampoo and Cut* 45 mins
Consult with an Aveda Barbering Expert, before enjoying an Aveda Shampoo Ritual including: shampoo, condition and invigorating scalp massage. Scissor over comb and clipper cut techniques will be used.

Artistic Director	£35
Creative Master	£32
Master Stylist	£28
Senior Stylist	£25
Stylist	£20
New Talent	£18

*Hair shampoo and Cut based on consultation.

One Grade All Over Clipper Cut £10
Traditional Clipper Cut including a relaxing Hot Towel Ritual.

Shampoo and Style £10
No scissors required for this on-the-go style-fix. Begin with an aveda men pure-formance composition™ Hot Towel Ritual, followed by bespoke styling (for all hair types).

Express Men's Manicure £18
Cleanse, cuticle work, shape and buff – finish with a Stress-Relieving Hand Ritual.

Express Refresh Facial £18
A revitalising express facial, to help reveal a brighter, smoother and more balanced complexion; leaving you and your skin feeling refreshed.

Detoxifying Scalp Cleanse with Hot Towel Ritual 15 mins | £10

The scalp is the foundation for healthy hair - this unique add-on service will help to remove product and sebum build-up that can clog pores. Plant-derived ingredients deeply cleanse to help restore and rehabilitate the scalp to its optimum health.



AVEDA SPA

Aveda Spa merges the science of performance-driven, plant-based skin and body care products with the art of high-touch experience to offer you a customised spa treatment based on your specific skin and body's needs. All spa treatments include a thorough **elemental nature™** consultation to create a holistic facial, body treatment or massage therapy that is designed just for you.

The Spa, designed over 2 floors, delivers beauty treatments, rituals and signature spa days, inspired by plant based healing traditions from around the world. The 'chill out zone' also offers the perfect Spa day, wedding party and special event venue and can be booked for private and exclusive celebrations.

SPA LOYALTY CARD

We are pleased to announce the launch of our spa loyalty card. Purchase a course of 5 treatments and receive your 6th treatment free, or pay as you go to receive a 20% discount on your 6th treatment.

Ask an Aveda professional for more information!

AVEDA FACIAL AND MASSAGE TREATMENTS

Select your time frame and after consultation your therapist will customise your facial or massage:

Pricing	Senior Therapist	Therapist
90 mins	£75	£70
60 mins	£55	£50
30 mins	£42	£37

Outer Peace™

Blemish Relief Treatment. A botanical approach to treating blemishes.

Botanical Skin

Resurfacing Treatment Aveda's botanical alternative to microdermabrasion.

Power Plant Peel

Provides the immediate exfoliation and radiance benefits of a 30% glycolic peel.

Massage Focus Options:

Stress - Fix™ Body Massage

Swedish and deep tissue massages are combined with foot reflexology and acupressure points.

Pregnancy Massage

Suitable from 14 weeks until baby's birth.

Chakra™ Balancing Massage

Deep tissue massage, foot reflexology and energy work.

Stone Fusion Massage

A combination of warm and cold stones are used for deep relaxation of the muscles.

This treatment will work deep into the muscles and as a result may cause some soreness or discomfort during or after the treatment, and in some cases, may leave a temporary mark or bruise.

Aroma Massage

A customised experience with your choice of Aveda aromas and tailored massage techniques.



tulasāra™ Facial Treatments

Dry, oily, ageing, uneven, sensitive and acneic skin conditions and eye concerns can all be addressed with a customised tulasāra™ facial treatment. After a thorough consultation, your skin therapist will provide the best combination of products, personalised Aveda aromas and techniques and design a customised treatment that will move your skin towards balance and reveal it's natural beauty.

Facial treatments are recommended on a weekly or monthly basis to achieve and maintain optimal results. Your skin therapist will develop a comprehensive treatment plan designed to meet your individual needs and expectations.

Pricing

90 minutes / £75

A customised facial with 30 minutes of intensive work on one area of focus.

60 minutes / £55

A customised facial with 20 minutes of intensive work on one area of focus.

30 minutes / £42

A customised facial with work on one area of focus, most effective in a treatment series.

15 minutes / £15

Add an express facial on to any other Hair or Spa treatment. A perfect 'taster' for our facials & products.

JOSHUA TREE SIGNATURE MASSAGE

Select your time frame and choose from the following;

Pricing	Senior Therapist	Therapist
55 mins	£52	£47
25 mins	£31	£28

- Indian Head
- Back, neck & shoulder
- Deep tissue
- Hand and arm
- Foot massage
- Energising Eye Treatment

Hopi Ear Candles 40 mins | £35

This gentle treatment is the perfect way to clear congestion from the ears and sinus area. Commencing with a relaxing pressure point massage to help release blockages and pressure.

Reflexology

A pressure point massage on your feet to treat a wide range of conditions and to promote optimum health and wellbeing.

Pricing	
30 mins	£31
60 mins	£52

Beauty on demand

Add on to any service.

Pricing	
15 mins	£15

- Energising Eye Treatment
- Indian Head Massage
- Back Massage
- Tulasara Facial
- Express Polish
- Foot Reflexology
- Replenishing Hand Treatment

AVEDA BODY TREATMENT OPTIONS:

Pricing	Senior Therapist	Therapist
90 mins	£75	£70
60 mins	£55	£50

Each of the three body treatments below can be customised with any of the following body care products:-

BODY POLISH

Exfoliates and moisturises the skin, leaving it soft and smooth.

BACK TREATMENT

This treatment deeply cleanses, exfoliates, massages and moisturises the back.

BODY WRAP

A combination of exfoliation, body mask and body wrap, with focused foot and scalp massage.

stress-fix™ Proven to reduce feelings of stress, infused with essences of lavender, lavender and clary sage.

beautifying Intensely nourishing, infused with the uplifting essences of lavender, rosemary and bergamot.

shampure™ Comforting and nurturing, infused with Aveda's unique blend of 25 pure plant and flower essences, including bergamot, lavender, lemon, petitgrain and ylang ylang.



SPA DAY

From group celebrations and wedding parties to complete escape days for one, The Joshua Tree offers a variety of packages to suit you.

Simply Chill Days

Include full use of the ROKO Health Club facilities.

Pricing

1 Treatment	£55
2 Treatments	£80
3 Treatments	£110

Simply Spa Treatments

Pricing

1 Treatment	£40
2 Treatments	£70
3 Treatments	£100

Choose from the following 25 minute treatments:

- Back, Neck & Shoulder Massage
 - Indian Head Massage
 - Express Facial
 - Body Polish
 - Manicure
 - Pedicure
 - Spray Tan
-

Signature Spa Days

Alternatively customise your precious time with us by choosing your own treatments and times. Price on consultation

A light lunch is included. Robe hire is available at £3.50 per person. Please bring your own towels. Payment is taken in full on booking and is non-refundable. Available Monday - Sunday subject to availability.

FAKE BAKE TANNING

Fake Bake gives you an even, natural looking tan quickly and safely. This award winning formula comes in a range of 'tan options' to suit you, your colouring and your lifestyle.

Original	25 mins £25
Rapid Tan	25 mins £25

All new guests are required to have a skin patch test and complete a full consultation at least 48 hours before any tanning treatment. Skin testing is also recommended if more than 12 months passes between treatments and if medical circumstances change.



EYELASH EXTENSIONS

Marvel Lashes are a fantastic semi-permanent method of creating longer fuller and glamorous lashes. Your new lashes will feel comfortable, are virtually weightless and look completely natural. The treatment is simple and safe – the lashes are adhered to your natural lash to create the desired effect. The lashes can last up to 2 months and with regular top up treatments the effect is indefinite.

Party Lashes

Give your eyelashes a fuller look for an event or night out. The application takes 30 minutes and can last up to a week.

Pricing

Introductory price for a full set	90 mins	£55
Top up	15 minutes	£12.50
Party lashes	30 mins	£25
Removal	15 mins	£10

Please note: A skin sensitivity test is required for all new guests 24 hours before the appointment. Eyelashes will naturally shed, but professional removal is advised.

AVEDA MANICURES AND PEDICURES*

Please select your time frame and your nail technician will carry out a full consultation to customise your manicure or pedicure to suit your needs.

Pricing

70 mins	£38
55 mins	£28
30 mins	£18
15 mins express polish	£11

Focus Options

- **stress-fix™** proven to reduce feelings of stress
- **shampure™** our gentle signature aroma is perfect for sensitive skin
- **beautifying™** Intensely nourishing & uplifting

Simultaneous manicure and pedicure combinations are available - please ask your nail technician.

*All manicure and pedicure services include filing, buffing, cuticle work and polish application.

OPI GEL COLOR

Pricing

Gel and removal	£38
Gel	£28
Removal only*	£10

*Receive a complimentary removal if you book within two weeks of your last OPI appointment.

Up to 14-day wear, high gloss shine, zero dry time, no nail damage. The patent-pending formulation is why OPI goes on like polish, wears like gel and removes in minutes.

O·P·I

WAXING & TINTING

Our waxing specialists strive to provide effective hair removal while ensuring maximum comfort. Using two different types of wax allows us to customise for the area of hair removal.

Wax	Senior Therapist	Therapist
Eyebrow	£12	£10
Lip or chin	£10	£8
Under arm	£15	£12
Arm	£18	£14
Bikini	£18	£14
Brazilian	£32	-
Hollywood	£38	-
Half leg	£21	£18
Full leg	£29	£25
Chest/Back	£20	£15

Tinting

Eyebrow tint £12

Eyelash tint £16

A skin sensitivity test is required 24 hours prior to any tinting service if you have not had an Aveda lash or brow tint in the last 12 months.

Threading

Threading allows control when shaping brows to ensure perfectly sculpted eyebrows. A cotton thread is used to glide across the skin, removing excess hair.

Eyebrows £12

Threading can be done on other areas of the face from £10.

GUEST INFORMATION

Medical Information

All clients are asked to complete a full medical questionnaire before any treatments to ensure your complete safety and comfort.

Booking & Cancellation Information

For some treatments and Spa Days, credit card confirmation or full payment may be required at the time of booking. We require 24 hours' notice to cancel an appointment or the full amount may be charged. We regret that some treatments/appointments may be necessary to treat as cancellation for clients arriving more than 15 minutes late or a shortened treatment time may be given.

Gift vouchers

Gift vouchers are the perfect way to show your friends, colleagues or loved ones just how much you appreciate them. Our vouchers are valid for 6 months from the date of issue and can be redeemed against any treatment or retail product of their choice. Gift vouchers are exclusive to the Joshua Tree and cannot be redeemed at any other Aveda salon.

Bridal

There are no occasions more special than your wedding day. Why not let us take the pressure off by helping

you coordinate your first bridal hair consultation and complete beauty programme to make sure you look and feel amazing on your special day.

Mother to Be

All Aveda blended essential oils are completely safe to use during pregnancy, however, if you prefer we will use neutral oils. All of our treatments are suitable during pregnancy and can be adapted to individual needs.

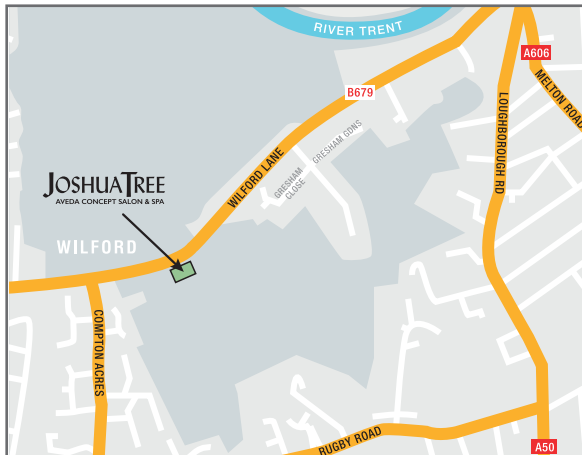
Children

Children's hair appointments (12 and under) are available Monday to Thursday. Babies and small children cannot enter into the spa rooms. Please be aware that guests under the age of 16 must be accompanied by an adult.

Relax, Unwind and Enjoy

We hope that your visits to the Joshua Tree are always a pleasure and you enjoy the entire experience. We value all feedback so we can continue to improve our services in the future. We want you to leave us feeling totally relaxed, so we respectfully ask that mobile phones are put on silence during your visit.

JOSHUA TREE AVEDA CONCEPT SALON & SPA service menu



ROKO Health Club
Wilford Lane
West Bridgford
Nottingham, NG2 7RN

For all bookings and enquiries
0115 981 3111
info@joshuatree-salon.com
www.joshuatree-salon.com

Opening Times

Monday	9.00	-	9.00
Tuesday	9.00	-	6.00
Wednesday	9.00	-	9.00
Thursday	9.00	-	7.00
Friday	9.00	-	6.00
Saturday	9.00	-	6.00
Sunday	10.00	-	4.00

